

Carneige Ceoil 🎵



Grúpa Ceoil a haon

**6.15 PM**

# An Ghaoth Aneas

Handwritten musical score for the song "An Ghaoth Aneas". The score is written on ten staves, each with a treble clef and a 2/4 time signature. The notes are written in a simplified style, and the lyrics are written below the notes. The lyrics are in Gaelic and use a simplified notation system for the notes.

Staff 1: C<sup>n</sup> | B A G B C<sup>n</sup> D' A B A A C<sup>n</sup>

Staff 2: B A G E D E G G C<sup>n</sup>

Staff 3: B A G B C<sup>n</sup> D' A B A A C<sup>n</sup>

Staff 4: B A G E D E G G

Staff 5: D' | G' A' G' G' F' E' D' E' D' D' C<sup>n</sup>

Staff 6: B A G B C<sup>n</sup> D' A B A A D'

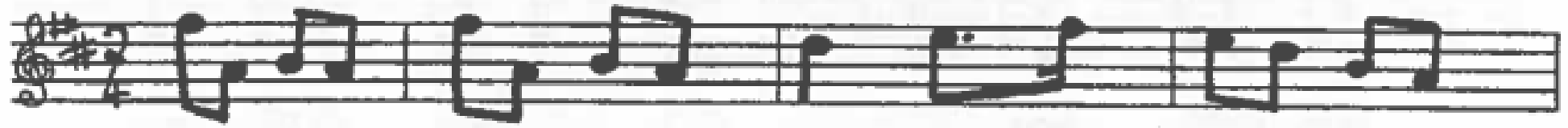
Staff 7: G' A' G' G' F' E' D' E' D' D' C<sup>n</sup>

Staff 8: B A G A B A G G

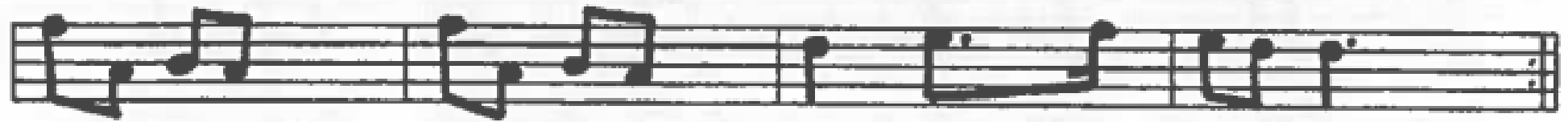




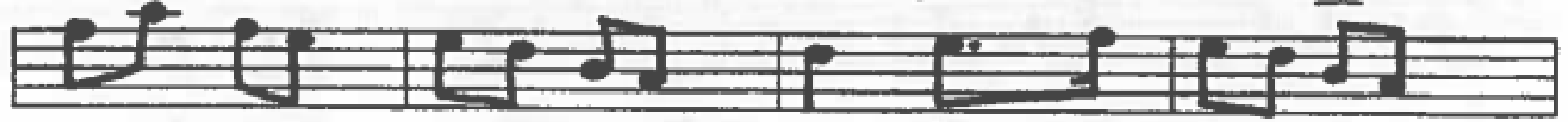
# The Kerry Polka



F' A B A F' A B A D' E' F' | E' D' B A



F' A B A F' A B A D' E' F' | E' D' D'

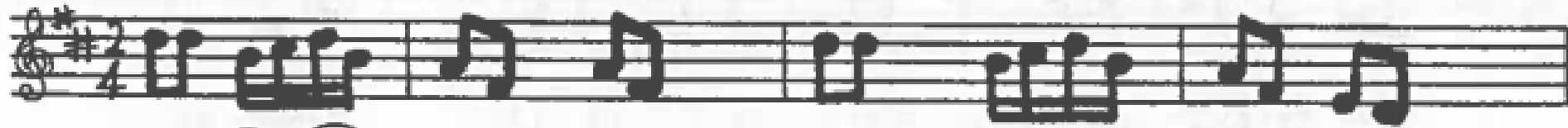


F' A' F' E' E' D' B A D' E' F' | E' D' B A



F' A' F' E' E' D' B A D' E' F' | E' D' D'

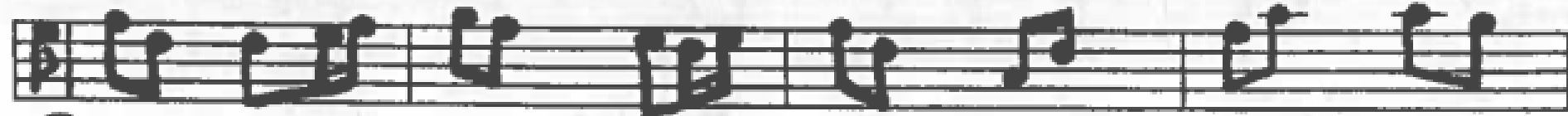
# Ryan's Polka



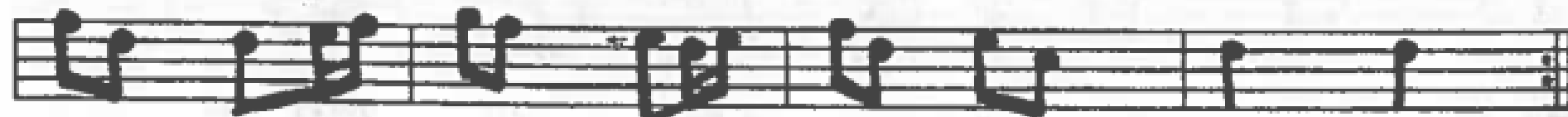
D'D' ḂC D' Ḃ A F A F D'D' ḂC D' Ḃ A F E D



D'D' ḂC D' Ḃ A F A D'E' F'D' E'C D' D'



E' (F'D' D' E' F' G' F' E' D'E' F'D' A D' F'A' A' G')

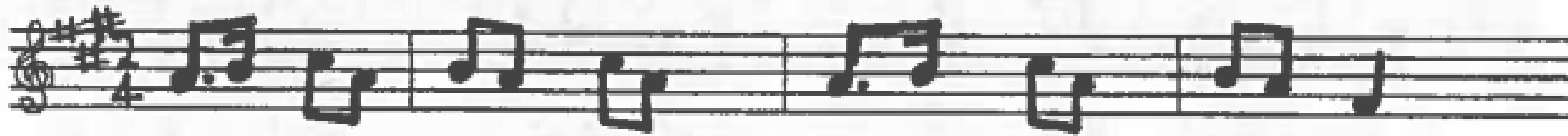


F'D' D' E' F' G' F' E' D'E' F'D' E'C D' D'

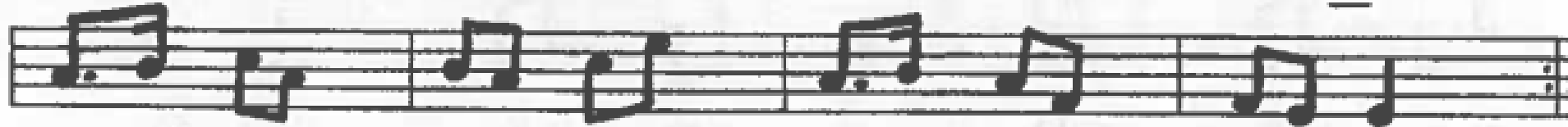
Carnegie Ceoil 



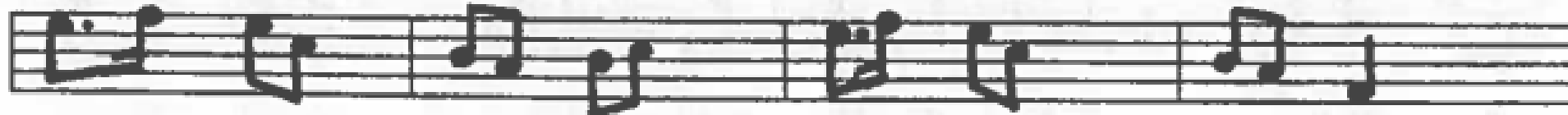
# The Britches Full of Stitches



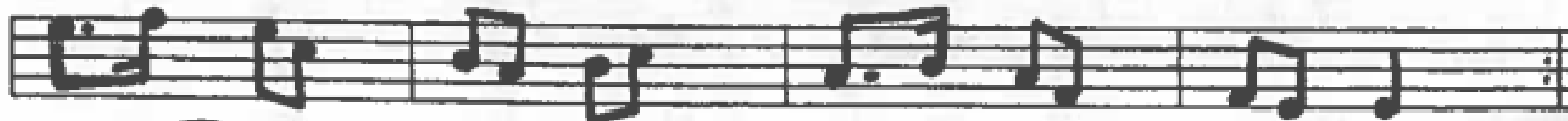
A B CA BA CA      A B CA BA F



A B CA BA CE'      A B AF FE E



E' F' E'C BA BC      E' F' E'C BA F



E' F' E'C BA BC      A B AF FE E



# Maggie in the Woods



G D G A B E' E' D' B A G A B A A



G D G A B E' E' D' B A B A G G



G' F' E' D' B E' E' D' B A G A B A A



G' F' E' D' B E' E' D' B A B A G G

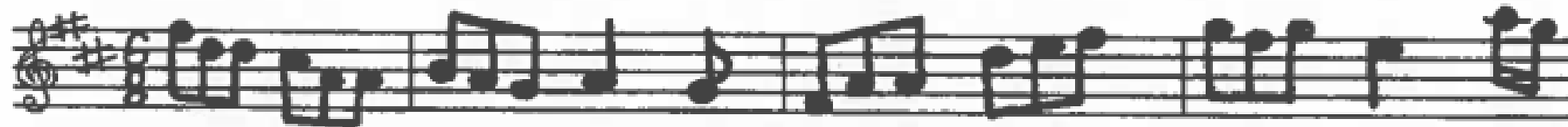
Carneige Ceoil 🎵



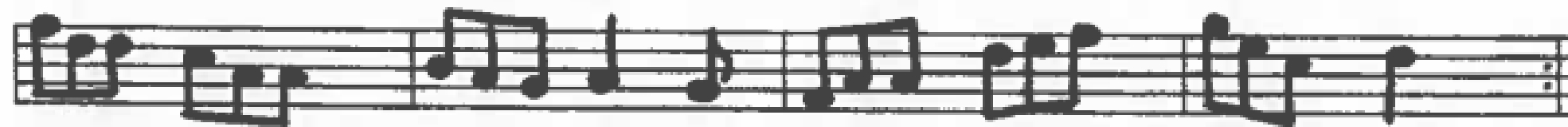
Grúpa Ceoil a dó

**6:50 PM**

# My Darling A sleep



F'D'D CAA BAG A G FAA D'E'F' G'F'G' E' A'G'



F'D'D CAA BAG A G FAA D'E'F' G'E'C D'



A'G FAA BAG FAA BAG FAA D'E'F' G'F'G' E' A'G'



F'D'D' CAA BAG A G FAA D'E'F' G'E'C D'



# Kesh Jig

Handwritten musical notation for the Kesh Jig, consisting of four staves of music with corresponding chord symbols written below each staff.

Staff 1: *GAG GAB ABA ABD' EDD' G'D'D E'D'B D'BA*

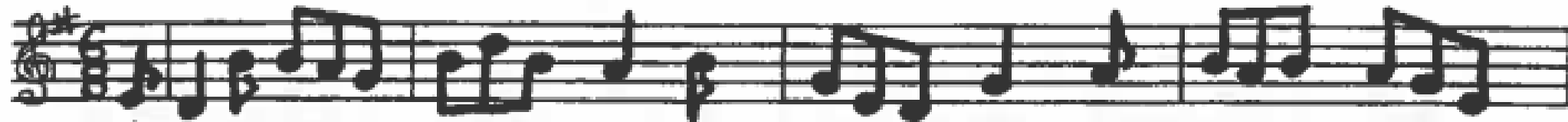
Staff 2: *GAG GAB A A ABD' E'D'D G'D'B AGF G*

Staff 3: *BAB D'BD' E'G'E' D'BG BAB D'BG GA AGA*

Staff 4: *B B D'BD' E'G'E' D'BD' G'F'G' A'G'A' B'G'F' G'*



# Out on the Ocean



E | D B BA G BD' B A B GED G A BAB AGE



D B BA G BD' B A B GED G A BGF G



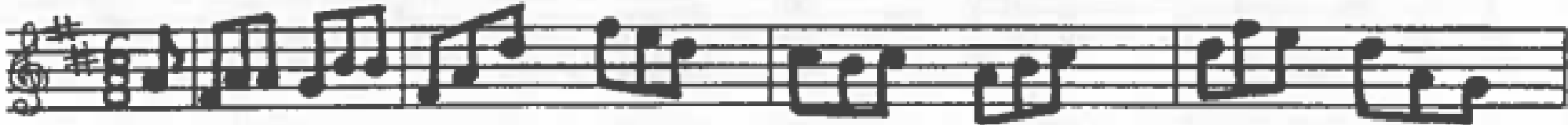
BD' | E'G'E' E'D'B E'G'E' E'D'B D'E'D' D'E'F' G'F'E' D'BA



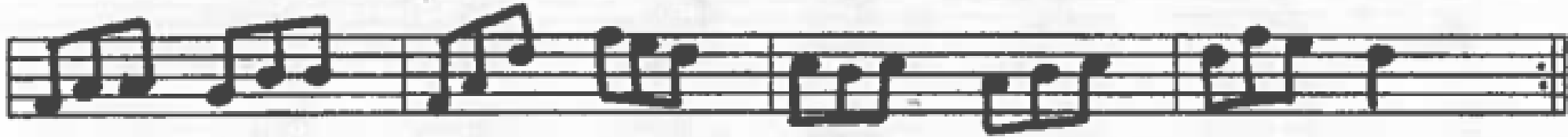
G A B D' E'G'E' D'BA GED G A BGF G



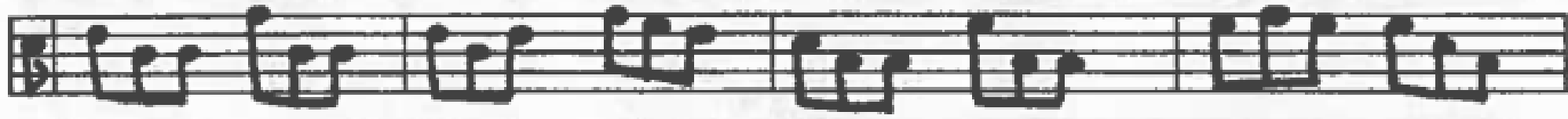
# Tripping Up the Stairs



A | FAA GBB FAD' F'E'D' CBC ABC D'F'E' D'AG



FAA GBB FAD' F'E'D' CBC ABC D'F'E' D'



C | D'BB F'BB D'BD' F'E'D' CAA E'AA E'F'E' E'CA



D'BB F'BB D'BD' F'E'D' CBC ABC D'F'E' D'



# Old Leitrim Jig

Musical score for 'Old Leitrim Jig' in G major, 6/8 time. The score consists of five staves of music with corresponding letter-based notation below each staff.

Staff 1:   
G G AGA BGE EDE GBD' E'G'D' E'G'E' E'D'B

Staff 2:   
G G AGA BGE EDE GBD' E'G'E' DBA G

Staff 3:   
GBD' E'G'D' E'G'D' E'D'B GBD' D'E'D' D'E'D' D'BA

Staff 4:   
GBD' E' D' E'G'D' E'D'B GBD' E'G'E' D'BA G

Carneige Ceoil 🎵



Grúpa Ceoil sínsearach  
**7:30 PM**

# Brosna Slide



Musical notation for Brosna Slide, consisting of five staves with notes and a corresponding line of handwritten notes below each staff.

Staff 1: E | D G G A BAB D' B A D FED A D FED

Staff 2: D G G A BAB D' B A D FED G G


Staff 3: F' | G' F' E'FG' F' E' D' B C'' B A B C'' D' E' F'


Staff 4: G' F' E'FG' F' E' D' B C'' A FGA G G




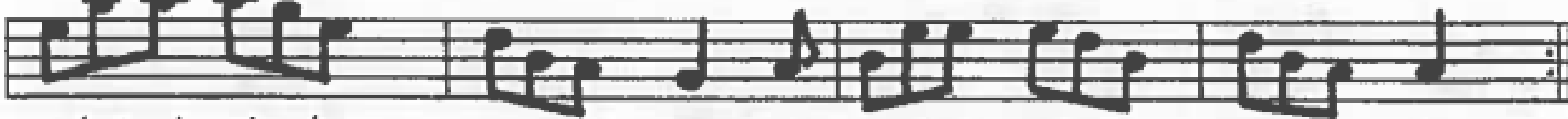
# The Liltin' Banshee

Musical score for 'The Liltin' Banshee' in G major, 6/8 time. The score consists of five staves of music with corresponding letter-based notes below each staff.

Staff 1:   
G | EAA EAA BAB G A BE'E' E'D'B D'BA GED

Staff 2:   
EAA EAA BAB G A BE'E' E'D'B D'BA A

Staff 3:   
D'|E'AA' A'G'E' D'BA G A BE'E' E'D'B D'E'F' G'F'G'

Staff 4:   
E'A'A' A'G'E' D'BA G A BE'E' E'D'B D'BA A

# Jim Wards Jig (G)



**1** |:G- GAB | AGE GED | GGG AGE | GED D EF |  
G- GAB | AGE GAB | Cn BA BGE|1 DED D EF:  
|2 DED D- B||

**2** |:Cn BA BAG | ABAA GB | Cn BA BGE | DED GAB |  
Cn BA BAG| ABAA BCn |D' Cn B AGE |1 GED D-B :  
|2 GED DEF||



# Battering Ram Jig

Carnéige Ceóil 



Musical score for "Battering Ram Jig" in G major, 2/4 time. The score consists of eight staves of music with corresponding chord progressions written below each staff.

Staff 1:  $B \mid D'BG \ BAG \ D'BG \ \underline{G} \ B \ D'BG \ AGE \ GED \ \underline{D} \ B$

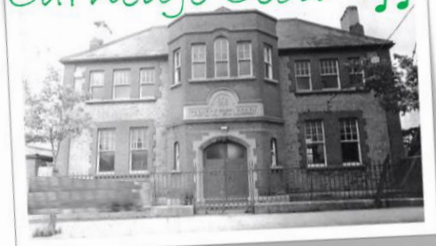
Staff 2:  $D'BG \ BAG \ BD'B \ BAG \ AGA \ BAB \ GED \ \underline{D}$

Staff 3:  $D' \mid D'E'G' \ AG'A' \ B'G'E' \ E'D'B \ D'E'G' \ AG'A' \ B'G'E' \ \underline{E'} \ A'$

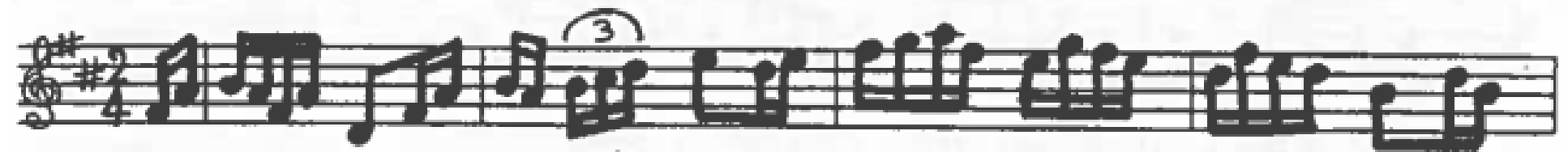
Staff 4:  $B'AG' \ A'G'E' \ G'E'D' \ E'G'E' \ D'BG \ AGE \ GED \ \underline{D}$

Staff 5:  $\underline{E'D'} \mid \underline{B} \ G \ \underline{A} \ G \ \underline{B} \ D \ \underline{D} \ C' \ BAG \ AGE \ GED \ DE'D'$

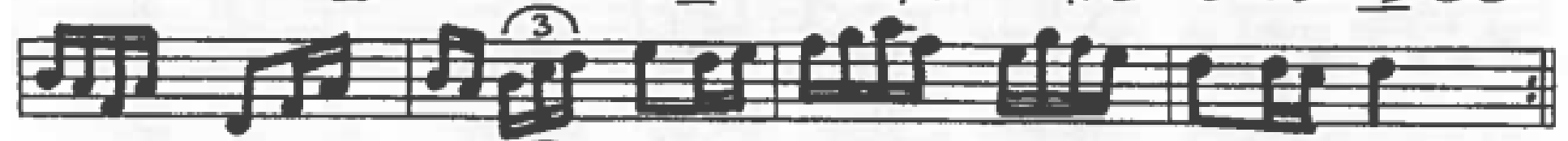
Staff 6:  $\underline{B} \ G \ \underline{A} \ G \ BD'B \ BAG \ AGA \ BAB \ GED \ \underline{D}$



# Boys of Blue Hill



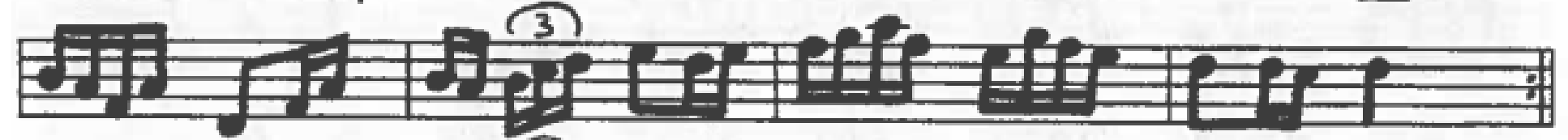
ḞA | ḂA ḞA D ḞA ḂA ḂĊḊ E' ḊE' ḞĠA'F' E'ĠF'E' ḊḞE'D' B ḊB



ḂA ḞA D ḞA ḂA ḂĊḊ E' ḊE' ḞĠA'F' E'ĠF'E' D' ḊĊ D'



ḞĠ | A'ḞḊḞ A'ĠḞ E'ḞĠA' B' A'Ġ ḞĠA'F' E'ĠF'E' ḊḞE'D' B ḊB



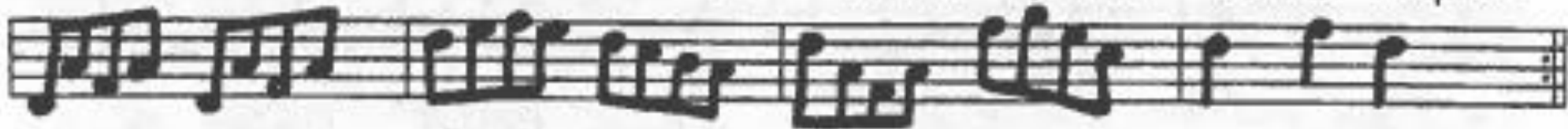
ḂA ḞA D ḞA ḂA ḂĊḊ E' ḊE' ḞĠA'F' E'ĠF'E' D' ḊĊ D'

# Harvest Home

Carnéige Ceól 



ÂF | DAFA DAFA DE'FE' D'CB A E'AF A GAFA E'DCB AGFE



DAFA DAFA DE'FE' D'CB A D'AF A FG'E'C D' F' D'



ĈD' | E' A <sup>3</sup>AAA F' A <sup>3</sup>AAA E' A <sup>3</sup>AAA F' A <sup>3</sup>AAA E'AF A GAFA E'FE' D'CB ABA GFE



DAFA DAFA DE'FE' D'CB A D'AF A FG'E'C D' F' D'



# Rolling in the Rye Grass



A AF DFAF G BG DGBG A AF DFAF GBAF E DF



A AF DFAF G BG DGBG A AF DFAF GBAF E DF



ABDE' F' FD' G' GE' FED'B ABDE' F' FG' A'FDF' E'FD'B



ABDE' F' FD' G' GE' FED'B ABDE' F' FG' A'FDF' E'FD'B



# Miss McCleod's



G B G D' G B G B B A B C B A G B G D' G B G A A G A C B A



G B G D' G B G B B A B D' E' F' E' D' B D E' F' G E' D' B A C B A



G G' E' F' G' E' D' B B A B C B A G G' E' F' G' E' A' G' A G' E' F'



G' G' E' F' G' E' D' B B A B D' E' F' E' D' B D E' F' G E' D' B A C B A



# Silver Spear

Handwritten musical notation for the song "Silver Spear". The notation consists of five staves of music in treble clef with a key signature of one sharp (F#). The notes are accompanied by letter-based tablature below each staff. The tablature uses letters G, F, A, B, C, D, E, and their first and second ledger lines (G', F', A', B', C', D', E'). Some letters are underlined, and some are enclosed in brackets. Triplet markings (a '3' in a circle) are placed above groups of three notes in several places throughout the piece.

9 | F A B A B A F A D' F' E' D' B C D A F A B A B A F A D' F' E' D' B A G

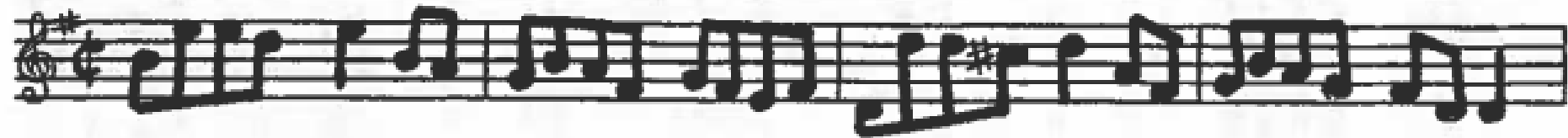
F A A B A B A F A D' F' E' D' B D' E' F' G G' G' F' E' F' F' E' D' F' E' D' B A

G' | F' A' A B A' B' A' F' G' F' E' D' B A G' F' A' A B A' B' A' F' G' F' E' D' B G'

F' A' A B A' B' A' F' G' F' E' D' B D' E' F' G G' G' F' E' F' F' E' D' F' E' D' B A [D'].



# Tarboltan



B E' E' D' E' B A G B A F G F E F D D' D' C# D' A F G B A G F D D



B E' E' D' E' F G E' F E' D' F' E' D' B A G B G F G A C' B G A F G E E



G' E' F' G' E' B E' G' E' B E' A' F' E' F' D' F' D' A D' F' D' A B A G F D D F



G B G F G A F E' D' E' F' G' F' E' D' B D' B A G A B G A F G E E